



Kapiti Fly Fishing Club

December 2024 Newsletter

The Kapiti Fly Fishing Management Committee would like to wish all members and their family a very Merry Christmas and Happy New Year, please take care out there on the water and roads.



In this month's newsletter photo: This month's photo was taken at last month's Inter Club Fly Tying Competition, which was won by the Hutt Valley Angling Club, the Kapiti Fly Fishing came a close second

Newsletter Contents

Page 3	Presidents Report
Page 4	Fly Casting Tuition by Gordon Baker
Page 4	Mid-Week Fishing Trips Hugh Driver
Page 5	Wader Safety Course – Saturday 1 March by Graham Evans
Page	Women on the Fly by Leigh Johnson
Page	Streamer Fishing Only for One Season by Conam Turnbull
Page	Anniversary of first Trout fishing season marked by Grant Miller
Page	Kapiti Fly Fishing Club - Proposed Fishing Trip Lake Otamangakau
Page	Kapiti Fly Fishing Club - Proposed Fishing Trip Lake Aniwhenua and surroundings
Page	Kapiti Fly Fishing Club April Rotorua Lakes Districts
Page	Sporting Life

Wader Safety Course Saturday 1 March

Please note: when reading an article if you see words underlined like this [Woolly Buggers](#) place your mouse on the words and click Ctrl and click your mouse at the same time it will open a link to another document.

Club activities

Date	Event	Coordinator
Sunday 5 to 10 January	Lake Otamangakau - Tongariro Holiday Park	Wayne Butson
Sunday 26 January	Club B.B.Q - location to be confirmed	Graham Evans
Sunday 2 February 10.30am	Fly Tying – 8 Weka Rd, Raumati	Gordon Baker
Sunday 9 February 10.30am	Fly Tying – 8 Weka Rd, Raumati	Gordon Baker
Sunday 16 to 20 February	Lake Aniwhenua	Wayne Butson
March date to be confirmed	Maunganui-a-te-Ao -	Malcolm Francis
Friday 12 to 20 April	Rotorua District – Unit 5/25 Robinson Avenue Holdens Bay	Wayne Butson
May to August dates TBC	Tongariro- and Tauranga -Taupo rivers	TBC

Please note that some dates/places might change, but the co-ordinator will let you know once you have indicated interest

Presidents report

Well Christmas is almost on us. I trust with all the other things that go on in people's lives at this time, that you have managed to get out onto the odd river or two and squelched that urge to have a rod in your hand and GO FISHING. I know how hard it is.....

We have the London branch of our family arriving shortly – probably before you get this newsletter in fact. Steve has intimated that he is looking forward to having some time on a river with me, if possible, even if it's the Otaki mouth chasing kahawai. I managed finally to nail one a couple of days ago – a bit skinny, but my first in about 6 or 7 trips. I'm always told that they were 'on' 20 minutes before I got there!

I also took a trip to the Oringi area of the Manawatu 3 weeks ago with John Walesford, a member of the Horowhenua Anglers Club. We spent about an hour looking at their club hut, seeing what it had in facilities and whether we might be able to use it. The upshot is that Kapiti club members are welcome to use the hut – at least in the short term. The farm is apparently for sale, and they will have to negotiate with the new owners regarding the longer term access.

The hut has a long (short?) drop, gas stove and all kitchen utensils, crockery and cutlery, 2 beds and 2 bunks - sleeping 6, solar (battery) lighting, and is about 300m from the river on a bench above the river.

See Google maps $40^{\circ}17'6.86''S$, $176^{\circ}2'42.46''E$ for location – map below. Access is by driving across the paddocks shown in red. The road that leads to the quarry just downstream, and through which access was previously available, is closed to outsiders.

The cost will be \$5 per person per night. If you are interested, please talk to me in the first instance.



That trip with John saw me fishing a 500m stretch where we parked the car in the upper part of the map above. I landed 2 rainbows of just under 3 and 4lbs, both in lovely condition so they fought well and dropped 3 before lunch, all on my favorite nymph. I treated it really as a competition beat, fishing very carefully and thoroughly through the likely water. Then after a quick lunch, in the section below, where John had fished in the morning, 2 x 2lb browns came to the net. So, the fish were where I expected (hoped?) they would be. We came home a

bit earlier than I usually would because John had a wee accident with his rod and didn't feel like fishing any more. The rod is now on its way to the US for some remedial treatment over Xmas.

Now onto more serious matters.

We are to run a wader safety course on the Ruamahanga on Saturday 1 March. A full blurb of what is on offer is included in this newsletter. It's FREE, so there is no excuse for you not to attend. I believe that even if you have been on a course before, it is really good to have another refreshment. You can always learn something, it's something all river users should do, so please make an effort and enroll in the workshop. It's you or your fishing buddy's life we are talking of saving. Places are limited to 15, so get in early.

We also have a couple of really good trips away in the New Year, see the trip section. Perhaps you might catch the fish of a lifetime at the Big O, or Lake Aniwhenua.

With that, I will finish wishing you all a very happy Xmas, enjoying family and friends and ideally spending some time with a rod in your hand

Tight Lines



Graham

Fly Casting Tuition by Gordon Baker

Club member Gordon Baker is available for one-on-one casting tuition. Gordon is a casting instructor with Flyfishers International (USA). He is available to help beginners get off to a good start and to assist more experienced members improve their distance casting skills. Although not yet an approved two-handed casting instructor Gordon is a keen learner willing to share new skills.

Email Gordon kiwiflyfisher@gmail.com or phone 0274946487 to arrange a suitable time for a lesson. There is no charge.



Mid-Week Fishing trips by Hugh

For those members who are lucky enough to be able to fish mid-week during the forthcoming season please confirm if you wish to be included in the mid-week fishers email list to: hugh.driver.nz@gmail.com

The emails are often sent out only giving very short notice to take advantage of the prevailing conditions and members availability, as an example the afternoon of day before the proposed trip.

If you are interested in participating on any mid-week fishing trips, please email Hugh Driver with your contact details and you will be added to the email list.

Inter Club Fly Tying Competition report by Gordon Baker

The Kapiti Club were the host for this year's event at the November club meeting. Our team comprised Graham Evans (size 6 Mrs. Simpson), Gordon Baker (size 12 Parachute Madam X), Michael Murphy (size 12 Flashback Pheasant Tail), and Wayne Naylor (size 12 White Caddis).

The Flyshop sponsored the event again with sample fly patterns, hooks and materials.

Unfortunately, Graham's wife became ill on the night, and we had to scramble to find a replacement, thankfully Steve Taylor responded to the pressure and put up a very credible performance, equalling the best score for the wet fly - without any preparation.

Wellington Flyfishers and Hutt Valley Anglers bought members to support their teams - so a good number turned up on the night.

Each team had four competitors, three seniors and a novice. The seniors were required to tie a pre-selected fly pattern and a personal choice fly, the novices member had to tie one pre-selected fly. The Senior team scores were about equal after completing the compulsory fly, but Hutt Valley Anglers cleared out once again with their very well presented Tyers Choice flies. Kapiti came second, Wellington third.

Wayne did very well to win the Novice trophy.



Hutt Valley winning Tyers Choice flies

Wader Safety Course Saturday 1 March

Free for members– paid for by the Kapiti Fly Fishing Club

The club has arranged for a wader safety course to be run on the Ruamahanga River on Saturday 1 March.

- The course will teach and/or remind you how to read rivers, where it is safe and how to cross, what to do if you do fall, getting out, and much more.

The course will be run by a professional fishing guide, Glenn Beach at his lodge on the river.

The course will be for a maximum of 15 people, so book your place soon.

Don't get caught out! No matter how many times you have been in rivers and how confident you might feel you are, rivers (and lakes) always have that ability to catch you unawares, and mistakes could be very uncomfortable or even fatal.

So come and learn the basics and the best ways to protect yourself, save others, or come and refresh your knowledge.

Details

When Saturday 1 March, 1.30 start and will last for approx. 3 hours– bring your lunch

Where 578 Te Whiti Rd, RD4, Masterton – see the red kayak at the gate

Bonus Fishing the Ruamahanga, seeing if you can catch some of the great fish in that system. There is time both before and after the course to try out the river, noting that fishing is available immediately adjacent to the course property, or in a small lake just a short drive away. Glenn will be able to help....

Added Bonus: Participants will be able to stay at the guide's campsite on the banks of the river overnight if you wish and fish the next day at no charge– so bring a tent or book the cottage

Contact: email or ring

Graham Evans graham@breakerbay.co.nz

021577476

Please advise if for any reason you cannot attend as we expect to have a waiting list.

KFFC Women on the Fly by Leigh Johnson

Take a look at the highlights from Women on The Fly's activities in 2024 in our latest community newsletter. Click this link: [Look What We Did! Highlights From an Amazing 2024](#)

WoTF NZ's key goals are to:

1. Be New Zealand's best-connected **Community** for women who fly fish.
2. **Partner** with other groups to host events.
3. Be a **Voice** for women who fly fish.

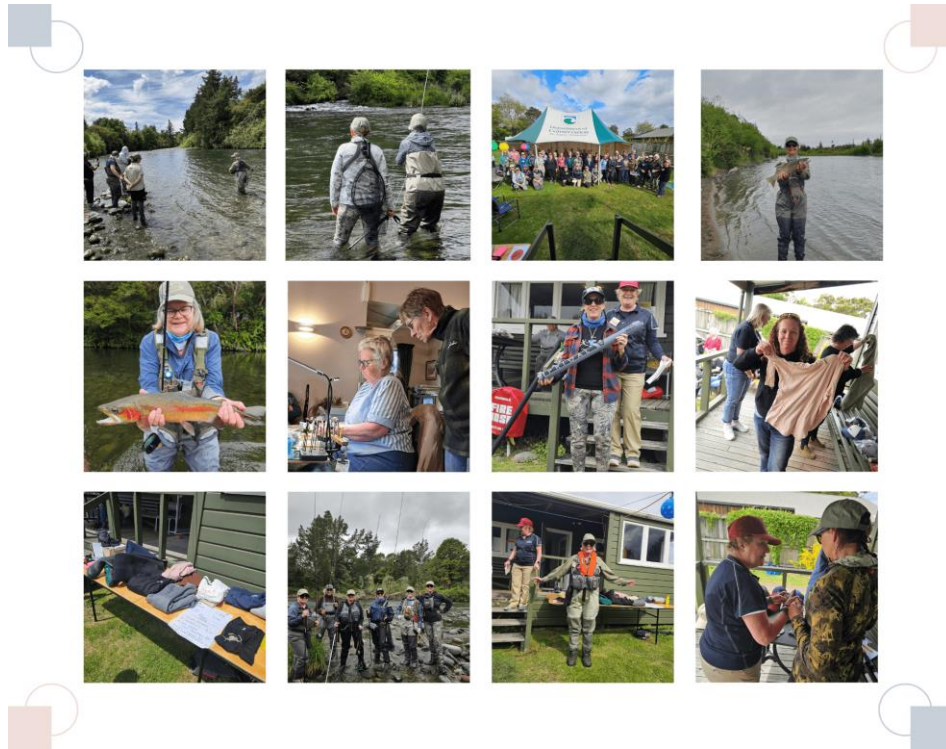
New WoTF Website

Check out our newly upgraded website at www.womenonthefly.nz, made possible with grant assistance from the [Pelorus Trust](#)! This site is your hub for all things women and fly fishing, and it will continue to evolve as we add more resources over time.

This is an addition to the other places you will find WoTF NZ. If you haven't already, please follow our activities on this [Facebook Page](#) and [Instagram](#). There is also a [private WoTF Facebook group](#) with >300 members that provides a safe space for women who fly fish, (or would like to fly fish) to share information, arrange fishing activities, and learn from each other about all things fly fishing.

A huge shoutout to our steering group members, Gordon Baker, Greg du Bern or Cheryl Naylor. It's been a rewarding year made special by the growing team of volunteers and supporters. Please let me know if you wish to be involved or have any questions.

Leigh Johnson- leigh.johnson@womenonthefly.nz



Streamer Fishing Only for One Season by Conam Turnbull



I had always heard it said: "If you want to catch big trout, you must present big flies."

For over two decades, like most UK river anglers, my trout fishing experience had never seriously delved into streamers. The most I had done were some still water action with small lures like yellow dancings, humongous' and damsel patterns.

Two seasons ago, however, I dedicated a significant portion of my time on the river to streamer fishing only. This was a shift that felt as much like a challenge as an evolution in my fly-fishing story.

Why embark on this experiment and put away the nymphs and dries for an entire year? The inspiration came from following a few seasoned UK anglers on Instagram who consistently landed the kind of wild brown trout I had long considered to be once-in-a-lifetime fish. These were real unicorns of the river. What was more surprising

was that these fish weren't just lucky breaks; they were being caught week after week. I had to find out what was going on.

After a few enlightening conversations with these anglers, countless hours watching videos on YouTube (often contradictory to each other) reading blogs from fellow anglers in the USA, and diving deeper into the world of streamer fishing, I felt excited to get out on the water and give it a proper go. This was not going to be straightforward. I was accustomed to the finesse and elegance of dry flies and nymphing. They have a certain gentle presentations and poetic pace. Throwing around large, water-disturbing flies felt almost barbaric in comparison.

Nevertheless, I set a goal to fully embrace streamer fishing for an entire season. I wanted to learn as much as I could, no matter the weather or water conditions. I was as ready for the very real possibility of getting skunked for most of the year. Every day would be a school day, and I was ready try, fail, learn, and evolve.

Where to Begin with Streamers?

There is no shortage of information that you can find on streamer fishing out there, but when I started, I kept it simple and made do with what I already had at my disposal. My setup was a 9ft 5 weight rod, paired with a floating line. Looking back, it wasn't ideal for casting larger flies, particularly as I began scaling up fly size. However, it was enough to get started. On my first outing of the season, I took to the river armed with a few basic streamers—size 12 woolly buggers with 3mm tungsten beads. My initial approach was straightforward: casting upstream and stripping back, just as you would do when fishing nymphs upstream. I was trying to make my black, heavily weighted humongous fly seem like a natural meal for hungry trout by diving up and down throughout the water column.

It only took about ten casts before I felt it—BOOM! A solid, aggressive take that bent the rod over and got my pulse racing. I had caught some decent fish before on dries and nymphs, but this was something else. It was an explosion of power, the fish leaping and running wildly. Five minutes later, I had my biggest river trout ever in the net—a respectable three pounds (what I would consider big in most UK rivers). Surely just a fluke, I thought. But on the next three outings, I broke that personal record again and again. I was armed only with a few simple streamer patterns and a very basic understanding of the method. The tug certainly had become the drug.



To be clear, streamer fishing isn't a magic bullet. You'll face more blank days compared to using nymphs or dries.

But for me, the thrill is in casting into a likely spot and waiting for that electrifying jolt. The lure of a big fish kept me coming back for more and more

Gear upgrades for Streamer fishing.

Before long, I upgraded my gear to a 9ft 5 weight and 9ft 6 weight rod. If you have a 9ft 7 weight for Stillwater, or even smaller river rods, those will do the job if you are wanting to start. Just get out and give it a go. I also picked up a sink-tip line to better handle deeper, faster currents, and a fast-sinking 8ft poly leader that could be added to my floater if needed. My Fulling Mill leaders ranged from 5 to 9 feet.

I cut them down depending on the conditions. In clear, shallow water, a longer leader helped avoid spooking the fish. In contrast, in murkier conditions, I'd go shorter and heavier. Using anything between 6 and 8lb [World class fluorocarbon](#) will see you right. Though, some anglers I know go even heavier.

Adjusting the leader length also helped me control how the fly moved in the water. A short leader produced sharper, more aggressive movement. In contrast, a longer one resulted in a softer, more natural swing. The fly's weight and balance also played a role, and a lot depends on the river itself. It was all about trying, experimenting, and figuring it out as I progressed through the season.

In truth, streamer fishing can be much more technical than it appears, sometimes just as technical as dry fly fishing. Casting across the river and letting the fly swing has become my favourite technique, especially in higher or falling water. Using a sink-tip line helped me get the fly to the right depth that I needed on those days when the rivers are higher and dirtier, brilliant conditions for streamers.



Like nymphing or using spiders, systematically working through every pocket of water, not just deep pools was key. Big fish often hid in spots that seemed unlikely at first glance. The beauty of streamer fishing is just how much ground you can cover in a single session. I tried casting into shallow pockets with streamers tied on jig hooks and often found surprisingly large fish hiding in these modest areas. I also tried using a euro-nymph setup for streamers but found I preferred a 5wt fly line; it allowed me to cover water more effectively.

If you want to try euro nymphing with jig streamers, head over to our YouTube channel and watch this tutorial with Signature Tyer George Daniel.

My Favourite Streamers

As for fly patterns, traditional Buzzer styles in size 12- 4 worked wonders. I used tungsten heads to get flies down quickly for faster water. Larger articulated patterns like the [Cheech Leech](#) or [Complex Twist](#) Buzzers were also fantastic. Over time, I started tying my own patterns using many of [Fulling Mill's tying materials](#) such as marabou and Zonker strips. My own flies, although not the prettiest, caught plenty of fish. The best colours for me were the classics: black, brown, and olive, with brown coming out on top. Conditions would dictate the exact choice—dark colours for dark days and clearer colours for brighter conditions. Here's a quick rundown:

- Dark day, clear water: Blacks, dark olives, dark clarets, browns.
- Bright day, clear water: Whites, light tans, light olives, browns.
- Dark day, coloured water: Black with blue or red UV flash, or dark brown with UV.
- Bright day, coloured water: Dark olives or tans with a bit of flash.

This approach worked about 70% of the time, but trout can be fickle, and adaptability is crucial.

When fishing streamers, the goal is to trigger a predatory response from the trout. Just like we manipulate a dry fly with subtle mends or movements, an erratic strip can cause trout to strike out of instinct. It's essential to mix up your retrieves, and if a fish follows but doesn't strike, be patient. Let it settle before casting again—just as you would let a chalk-stream trout get comfortable before presenting a dry fly. Timing is everything.

Streamer fishing also isn't about standing in one place for long. It involves covering a lot of water, and if nothing happens after a few casts, it's time to move. Sometimes, you'll walk miles and cast endlessly for just one fish—but that fish might just be the one of a lifetime.

I certainly don't claim to be the most seasoned streamer angler, and these aren't necessarily the best techniques, but they are what I've picked up in a relatively short time. They've helped me land some rather lovely trout. Let me leave you with a few tips:

Top Tips

- Three to five casts per spot: change up your retrieves—fast, slow, erratic. Then step down a metre and repeat.
- Cover ground: keep moving; don't get too settled, explore the water, every piece of it, you never know what's around the corner.
- Trust the fly: focus on depth and retrieve rather than changing colour constantly. If nothing bites after an hour, then switch colours. If still nothing, try downsizing the fly.
- Fish high or rainy conditions: these are often some of the best times, and you'll likely have the river to yourself. Almost all of my 3lb plus fish have come on rainy days.
- Make it look alive: make your fly move like a baitfish. It sounds simple but takes practice, might sound silly but I say in my head "just keep swimming, just keep swimming" to ensure I keep the fly moving at a rhythm.
- Note the time of day: patterns can change, so make note of what worked and when in a little notebook. Also note where you found your trophy trout.
- Buy quality tippet: there's nothing worse than losing a big fish due to break. I've personally stuck with [Fulling Mill's Fluorocarbon](#) because I know that it works.

I hope this gives you some inspiration to give the streamers a bash. Though I am far from an expert, I do love fly fishing, and streamer fishing has been an exhilarating addition to my experience. I'm certainly have enjoyed the delicate takes of dries and the subtle game of nymphing again, but streamers have definitely earned their spot in my fly box. May you all land that trophy in the future.

Anniversary of first Trout fishing season marked by Grant Miller



Otago Fish & Game councillor John Highton re-enacts the scene on the Water of Leith, Dunedin, where Alexander Campbell Begg became the first licensed angler to catch a trout on December 1, 1874

It seems fish were elusive in Dunedin's Water of Leith on the 150th anniversary of the first trout being caught under licence in New Zealand. The nation's first freshwater sports fishing season was in Otago, starting on December 1, 1874, and Alexander Campbell Begg was the first person to have success on the opening day.

Casting his line in the Water of Leith, he caught the first legal trout and ended up with 20 fish, weighing 13 pounds (almost 6kg), all caught on the fly, historical records show. In several streams in and near Dunedin, "good baskets" of trout were obtained by anglers in a few hours' fishing.

The three-month trout fishing season was launched by the Otago Acclimatisation Society — the forerunner to Otago Fish & Game Council. On Saturday, a re-enactment was run at the Water of Leith and descendants of Mr Begg were there.

Great-great-great-grandson second-year physiotherapy student Nick Brady, of Dunedin, said he liked to spend some time fishing. It had been interesting to look through some old photos and learn a little family history, he said yesterday.

No, we didn't catch any fish, unfortunately," Mr Brady said.



Holding an image of fishing identity Alexander Campbell Begg in Dunedin is his great-great-great-grandson Nick Brady, alongside great-granddaughter Lal Mulligan

Lal Mulligan, great-granddaughter of Mr Begg, made the trip from Ashburton.

Ms Mulligan said her father was keen on fishing and she had received all his rods and when she looked through them one day, there was one that dated back to Mr Begg's time. "In 1884, he was presented with a beautiful split cane rod in recognition of his services to the acclimatisation society," she said.

It was now part of the Toitū Otago Settlers Museum collection.

"He was a very staunch Presbyterian, and he did a lot in the community."

What began in Otago grew into a popular national pastime. More than 130,000 anglers each year head to New Zealand's rivers, lakes and streams. Otago Fish & Game Chief Executive Ian Hadland said freshwater angling was deeply embedded in the national identity.

"While rods and reels may have changed, the core experience endures — the pursuit of an elusive fish with a fly, lure or bait," he said. "For generations, angling has connected Kiwis to a shared passion to escape into nature, reflect and unwind, enjoy each other's company, and bring home fish for the table."

The licensing system remains central to Fish & Game's efforts to manage freshwater fisheries. Anglers' licences fund conservation programmes, habitat restoration projects and water quality monitoring.

Kapiti Fly Fishing Club

Proposed Fishing Trip

Lake Otamangakau

Location: Tongariro Holiday Park located at the junction of State Highways 46 and 47. There is a mix of share double, single cabins, self-contained units and powered sites. Sleeping bags best.

There is a shared Kitchen which has two stoves, two fridge freezers, electric jugs and multiple power sockets. There is a gas BBQ. There are lots of foreign tourists doing Tongariro Crossing etc. There are no nearby shops or food outlets so you need your own food.

There are showers, washing machines, a games and TV room. Cell phone coverage is marginal at the accommodation but good at the Lake.

Date From: Sunday, 5 January 2025

To: Friday, 10 January 2025

Photos of location: Go to website www.thp.co.nz

Description of location: Accommodation at the junction of highways 46 and 47 and it is 7km to Lake Otamangakau boat ramp. Lake Rotoaira is also adjacent and Turangi is 19 minutes' drive. A Taupo license is required, and an additional license is required for lake Rotoaira.

Fishing techniques/equipment suitable for location: Standard Lake gear, nymph, wet line, float tube, boat, canoe and kayak

Trip organisers name/phone /email: Wayne Butson 0274962461 waynebutson@gmail.com

Trip party size/spaces available: 2 or more individuals (have provisionally booked 4 share twin cabins.

Travel Arrangements: To be arranged with organiser

Meeting time and place for start of trip: To be arranged by participants

Pickup point or stops along the way: By arrangement

Trip grade: **Easy** **Suitable for all. No special equipment required.**

Suitable for youth anglers (need KFFC parental consent form): Yes

Accommodation available/how to book:

CONTACT TONGARIRO HOLIDAY PARK AND STATE YOUR WITH KFFC ASAP

Nightly cost and spending money required:

SINGLE PERSON CABIN \$60.00 PER NIGHT. SHARE TWIN IS \$37.50PP OR \$75 PER NIGHT.

What food to bring: We can all take turns cooking a meal for all or each person can bring their own.

What bedding to bring: Pillow, sleeping bag or sheets & blankets

Google map point and/or website links and access maps: <https://maps.app.goo.gl/ZA4YZ53YzskqFipMA>

Fish & Game maps and WAMS links:

[Lake Otamangakau Map | NZ Fishing](#)

Personal location beacons, smartphones, and medical/First Aid kits: One PLB with trip

organiser also multiple smartphones likely.

Name of any members going with First Aid qualifications: TBA

Name(s) of trip reporter and photographer: TBA (anyone but the trip organizer)

Any other information or comments:

Departure time is 10am on the last morning of your departure unless otherwise arranged.

Kapiti Fly Fishing Club

Proposed Fishing Trip

Lake Aniwhenua and surroundings

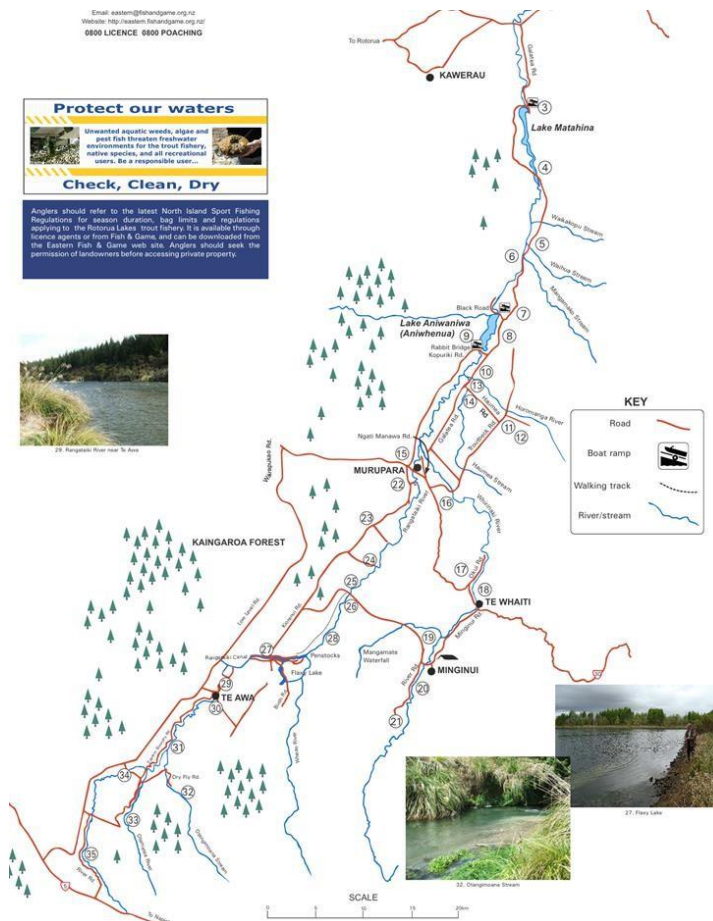
Location: Lake Aniwhenua is open all year. Access is off Black Rd, off Galatea Rd. Rainbow and brown trout, fly and spin. It is a hydro lake on the Rangitaiki River. The area includes the Whirinaki, Rangitaiki and Horomanga rivers. This is an area that provides opportunities for all levels of fishers and all levels of physical fitness.

The central Rangitaiki (between Aniwhenua and Lake Matahina has the Waihua and Mangamoko streams. The accommodation can accommodate up to 6 people. The house is 3 bedroom with 1 room upstairs and 2 downstairs as well as kitchen, living/dining area and bathroom. The house has fully equipped kitchen with Oven, Microwave, Fridge, Deep Freezer, Washer and Heaters.

Date From: Sunday, 16 February 2025

To: Thursday, 20 February 2025

Photos of location:



Description of location: 67 Black Road, Galatea.

Fishing techniques/equipment suitable for location: Standard fishing gear, nymph, Euro fishing or wet line, boat, float tube, strider, spinning etc.

Trip organiser name: Wayne Butson 0274962461 waynebutson@gmail.com

Trip party size/spaces available: 6 individuals

Travel Arrangements: by mutual agreement between participants

Meeting time and place for start of trip: To be agreed

Pickup point or stops along the way: To be agreed

Trip grade:

- Easy Suitable for all, no special equipment required.
- Moderate Reasonable level of fitness. Any special equipment required?
- Tough Suitable only for fit members. Any special equipment required?

Suitable for youth anglers (need KFFC parental consent form): Yes

Accommodation available/how to book:

PREBOOKED BY TRIP ORGANIZER AND PAYABLE TO HOST PERSONALLY

Nightly cost and spending money required:

HAS BEEN PRE-BOOKED. \$35.00 EACH PER NIGHT.

What food to bring:

ONE MEAL FOR ALL TO SHARE ON A TURNABOUT BASIS OR BRING YOUR OWN.

What bedding to bring: **Pillow, sleeping bag or sheets and blankets**

Google map point and/or website links and access maps:

<https://maps.app.goo.gl/2JiBU52T6xhHe1NaA>

Fish & Game maps and WAMS links:

<https://www.fishandgame.org.nz/assets/DMS/Fishing/Where-to-fish/Locations/Eastern/Rangataiki-River-System-Horomanga-Whirinaki.pdf>

Personal location beacons, smartphones, and medical/First Aid kits: Organiser has a
PLB and there will be multiple smartphones

Name of any members going with First Aid qualifications:

TBC NAME(S) OF TRIP REPORTER AND PHOTOGRAPHER:

ANYONE OTHER THAN THE TRIP ORGANISER

Any other information or comments:

Departure time is 10am on the last morning of your stay unless otherwise arranged.

Kapiti Fly Fishing Club April Club Trip

Location: Rotorua Lakes District

Date From: **Saturday 26 April 2025**

To: **Saturday, 3 May 2025**

Photos of location:



Description of location: Rotorua is a world-class destination renowned for its geothermal landscapes, rich Māori culture, and incredible backyard of with ancient forests and sparkling lakes. Best locations include the northwest side around Ngongotaha and the Waiteti Stream mouths and at the Hamurana Stream and Awahou mouths which all fish well in summer but can produce fish throughout the year. The Oahu Channel and Kaituna River also provides options. Lake Rotorua is a high catch rate area for rainbow and brown trout. There are 8 lakes and 8 rivers within easy distance from the accommodation. Boat fishing has a high success rate

Fishing techniques/equipment suitable for location: Flyfishing or spinning. Waders and wet weather gear. Floating and sinking lines. Smelt flies, Woolly buggers and boobies with trolling or harling tackle if boating.

Trip organisers name: Wayne Butson 0274962461 and waynebutson@gmail.com

Trip party size/spaces available: a total of 8 spots with two already taken

Travel Arrangements: TBA. I will be taking a car and boat. I will be there before the 12th

Meeting time and place for start of trip: TBA and agreed by travellers

Pickup point or stops along the way:

Trip grade: Easy Suitable for all, no special equipment required.

Suitable for junior anglers (need KFFC parental consent form): No

Accommodation available/how to book:

Unit 5/25 Robinson Avenue, Holdens Bay, Rotorua. Sleeps 8. Some off-street parking. 4 bedrooms, 1 bathroom and 1 kitchen. 3 rooms will be sharing with a mix of bunks and singles and 1 room has queen bed

Nightly cost and spending money required: should be about \$20.00 a night but depends on final numbers.

What food to bring: lunches and any meals you want to cook. Multiple food opportunities in the area and a supermarket just down the road (5 mins drive).

What bedding to bring: Must supply own sheets, pillowcases and towels. Duvets etc provided.

Google map point and/or website links and access maps: Suggest you go to our club website or Facebook page and my presentation on Rotorua will set the scene

Fish & Game maps and WAMS links:

Personal location beacons, smartphones and medical/First Aid kits:

Medical centre by supermarket and basic first aid (I am very accomplished at removing flies from body parts of others having lots of practice on Oahu Channel over the years). Bring a PLB if you have one.

Name of any members going with First Aid qualifications:

Name(s) of trip reporter and photographer:

Organiser will select and nominate with no right of refusal or appeal.

Any other information or comments:

The New Sporting Life Turangi

[Visit website](#)

Fishing outfitters to the world famous Tongariro River. Whether you're walking, tramping, mountain biking, rafting, hunting, fishing, boating or just enjoying the great outdoors, Sporting Life is there to make it more enjoyable.

We're New Zealand agents for:

- Simms waders and accessories
- Redington fly rods reels and waders
- Magnum neoprene waders
- Kilwell fly rods
- Lampson fly reels
- Manic Tackle flies
- Rio fly Lines
- Primal fly rods
- OPST
- Category 3 flies
- Sage fly rods and fly reels
- Patagonia waders and wading boots
- Airflo fly rods and fly lines
- Scientific Anglers fly lines
- Manic Tackle flies
- Umpqua fly tying materials
- Scott fly rods
- Echo fly rods
- Loon Outdoors

Phone: 07 386 8996

Address:

Turangi Mall, Town Centre Turangi
Town Centre
Turangi

Newsletter content with built-in links to other documents by Editor

Readers of our newsletter may not realise that when you see a name or wording underlined in an article, as an example [a Harvey leader](#) this is a link to another article or video where you can find more information. All you need to do is hold down your CTRL key and click on the words and the link will open.

Purpose:

To promote the art and sport of Fly Fishing.

To respect the ownership of land adjoining waterways.

To promote the protection of fish and wildlife habitat.

To promote access to all rivers, streams and lakes.

To promote friendship and goodwill between members.

To promote and encourage the exchange of information between members.

To promote sustainable fishing practices in order to protect this lifestyle and the sport for future generations.

To develop the knowledge and skills of our members, and

To encourage friendship and goodwill amongst all members whether current, past or prospective.

Club meetings

You are invited to attend our club meetings that are held on the **Fourth Monday** of each month.

The venue is the Ocean Road Community Centre, 45 Ocean Road, Paraparaumu, 5023

Our **meetings start at 7:30pm** with fellowship followed by speakers or activities.

Club Committee meetings are held on the first Tuesday of each month and the meetings are held at the Waikanae Boating Club and start at 7:30pm.

Contacts

President: Graham Evans
Email: graham@breakerbay.co.nz.

Secretary: Greg du Bern
Email: kffcsecretary@gmail.com

Treasurer Kras Angelov:
Email: krasimir.angelov@gmail.com

Vice President Leigh Johnson
Email: leigh@leighjohnsonnz.com

Past President Wayne Butson
Email: Waynebutson@gmil.com

Committee: Mike Noon:
Email: mike.noon@outlook.com

Gordon Baker:
Email: kiwiflyfisher@gmail.com

Cheryl Naylor
Email: wayne_cheryl@xtra.co.nz

Club Coach Gordon Baker:
Email: kiwiflyfisher@gmail.com

Newsletter Malcolm Francis: ph. 027 384 6596
Email: malcolm1@xtra.co.nz

IMPORTANT NOTICE

Please remember that the club has two Five Weight 8'6" fly rods that members are welcome to use, just contact Malcolm Francis.

Join the: [Kapiti Fly Fishing Club - Members & Friends Facebook Group](#)